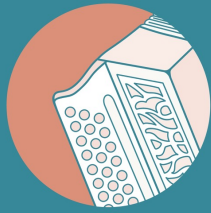
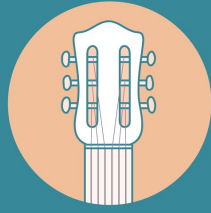


The Young Folk Club



Traditional Tunebook

56 Traditional Tunes
for alto clef instruments

About These Tunes

This tunebook is a collection of popular session tunes and lesser-known gems. It was originally created as a resource for The Young Folk Club online sessions, but is a great set of tunes for any session, or to learn and play at home.

Many of these tunes were collected in England, but there are also some from Scotland and Ireland. All of them are traditional, meaning the identity of their composers has been lost over time.

The tunes in this book are organised into sections based on time signature or dance style, so it's easy to find a particular tune type.

There are several versions of the tunebook in various clefs and transpositions to help cater for different instruments. It's possible a small section of a tune might not fit within the range of your instrument, but you could try changing the octave or slightly adapting a few notes - this is all part of the folk process!

Happy playing!

Designed and compiled by **Rowan Collinson**
Additional transcription by **Finn Collinson**

On behalf of the **EFDSS Youth Forum** for **The Young Folk Club**



CONTENTS

Pg.

4/4 TUNES

- 4** 1 From Night 'Til Morn
 2 Foul Weather Call
 3 Bagpipers
- 5** 4 Chain Cotillion
 5 Creef Fair
 6 Horses Brawl
- 6** 7 Double Lead Through
 8 The Cuckoo's Nest
 9 Blue Eyed Stranger
- 7** 10 Emma's Reel
 11 The Bull Ring
 12 Rochdale Coconut Dance
- 8** 13 Jack Robinson
 14 S'iomadh Rud a Chunna Mi
 15 Dunrobin Castle
- 9** 16 Up Da Stroods...
 17 Old Tom of Oxford
 18 Princess Royal

2/4 POLKAS

- 10** 19 The Ballydesmond
 20 Bear Dance

JIGS

- 11** 21 The Lark in the Morning
 22 Young May Moon
 23 Hopkinson's Favourite
 24 Banks of the Dee
- 12** 25 Dribbles of Brandy
 26 Seven Stars
 27 Morgan Rattler
- 13** 28 Upon A Summer's Day
 29 The Coleraine

Pg.

- 30 Joe Derrane's
- 14** 31 The Old Favourite
 32 Jenny Pluck Pears
 33 Banish Misfortune
- 15** 34 Hunt the Squirrel
 35 Swaggering Boney
 36 Black Joak
- 16** 37 The Kesh
 38 Out On The Ocean

SLIP JIGS

- 17** 39 The Derby Hunt
 40 Peacock Followed the Hen
 41 Namptwich Fair
 42 Andrew Carr's
- 18** 43 The Butterfly
 44 Foxhunter's Jig

3/2 HORNPIPES

- 19** 45 If You Will Not Have Me...
 46 Purlongs
 47 Cobbler's Hornpipe
- 20** 48 Barham Down
 49 The Bonny Miller
 50 Keys to the Cellar
 51 Bullock's Hornpipe

WALTZES

- 21** 52 Michael Turner's Waltz
 53 Orange in Bloom
 54 Sussex Waltz
- 22** 55 Woolly and Georgey
 56 Love and Whiskey

4/4 Tunes: Rants, Reels, Hornpipes, Polkas

1. From Night 'Til Morn

Musical score for 'From Night 'Til Morn' in G major (one sharp) and 4/4 time. The score consists of five staves. The first staff is the treble clef, and the remaining four are bass clefs. The melody is a simple, rhythmic tune with a repeat sign at the end of the first line. The bass lines provide a steady accompaniment.

2. Foul Weather Call

Musical score for 'Foul Weather Call' in G major (one sharp) and 4/4 time. The score consists of four staves. The first staff is the treble clef, and the remaining three are bass clefs. The melody is a simple, rhythmic tune with a repeat sign and two endings. The bass lines provide a steady accompaniment.

3. Bagpipers

Musical score for 'Bagpipers' in G major (one sharp) and 4/4 time. The score consists of four staves. The first staff is the treble clef, and the remaining three are bass clefs. The melody is a simple, rhythmic tune with a repeat sign and two endings. The bass lines provide a steady accompaniment.

4. Chain Cotillion (Sussex Cotillion)

Musical score for Chain Cotillion (Sussex Cotillion). The score is written for three staves in 4/4 time, with a key signature of one sharp (F#). The first staff begins with a treble clef and a 4/4 time signature. The second and third staves begin with a bass clef. The music consists of a series of eighth and sixteenth notes, with a repeat sign at the end of the second staff.

5. Creef Fair

Musical score for Creef Fair. The score is written for three staves in 4/4 time, with a key signature of one flat (Bb). The first staff begins with a treble clef and a 4/4 time signature. The second and third staves begin with a bass clef. The music consists of a series of eighth and sixteenth notes, with a repeat sign at the end of the second staff.

6. Horses Brawl

Musical score for Horses Brawl. The score is written for six staves in 4/4 time, with a key signature of one sharp (F#). The first staff begins with a treble clef and a 4/4 time signature. The second and third staves begin with a bass clef. The music consists of a series of eighth and sixteenth notes, with a repeat sign at the end of the second staff.

7. Double Lead Through

Musical score for 'Double Lead Through' in 3/4 time, key of D major. The score consists of six staves. The first two staves are the melody, starting with a half rest followed by a dotted quarter note G4, then an eighth note A4, and a quarter note B4. The next two staves are the bass line, starting with a dotted quarter note G3, then an eighth note A3, and a quarter note B3. The fifth staff is a repeat sign. The sixth staff has two endings: the first ending is a quarter note G4, an eighth note A4, and a quarter note B4; the second ending is a quarter note G4, an eighth note A4, and a quarter note B4.

8. The Cuckoo's Nest

Musical score for 'The Cuckoo's Nest' in 4/4 time, key of D major. The score consists of three staves. The first staff is the melody, starting with a quarter note G4, an eighth note A4, a quarter note B4, and a quarter note C5. The second staff is the bass line, starting with a dotted quarter note G3, an eighth note A3, and a quarter note B3. The third staff is a repeat sign. The first ending is a quarter note G4, an eighth note A4, and a quarter note B4. The second ending is a quarter note G4, an eighth note A4, and a quarter note B4.

9. Blue Eyed Stranger

Musical score for 'Blue Eyed Stranger' in 4/4 time, key of D major. The score consists of three staves. The first staff is the melody, starting with a quarter note G4, an eighth note A4, a quarter note B4, and a quarter note C5. The second staff is the bass line, starting with a dotted quarter note G3, an eighth note A3, and a quarter note B3. The third staff is a repeat sign. The first ending is a quarter note G4, an eighth note A4, and a quarter note B4. The second ending is a quarter note G4, an eighth note A4, and a quarter note B4.

10. Emma's Reel

(Sonia's Kitchen)

The musical notation for 'Emma's Reel' consists of four staves. The first staff begins with a treble clef, a key signature of one sharp (F#), and a 4/4 time signature. The melody starts with a quarter rest, followed by a quarter note G4, and then a series of eighth notes: A4, B4, C5, B4, A4, G4, F#4, E4, D4, C4. The second staff continues the melody with a quarter note D4, followed by eighth notes C4, B3, A3, G3, F#3, E3, D3, C3. The third and fourth staves provide a bass line, starting with a treble clef and a key signature of one sharp. The bass line consists of eighth notes: G3, F#3, E3, D3, C3, B2, A2, G2, F#2, E2, D2, C2.

11. The Bull Ring

The musical notation for 'The Bull Ring' consists of two staves. The first staff begins with a treble clef, a key signature of one sharp (F#), and a 4/4 time signature. The melody starts with a quarter note G4, followed by eighth notes A4, B4, C5, B4, A4, G4, F#4, E4, D4, C4. The second staff continues the melody with a quarter note D4, followed by eighth notes C4, B3, A3, G3, F#3, E3, D3, C3. The third and fourth staves provide a bass line, starting with a treble clef and a key signature of one sharp. The bass line consists of eighth notes: G3, F#3, E3, D3, C3, B2, A2, G2, F#2, E2, D2, C2.

12. Rochdale Coconut Dance

The musical notation for 'Rochdale Coconut Dance' consists of four staves. The first staff begins with a treble clef, a key signature of one sharp (F#), and a 4/4 time signature. The melody starts with a quarter note G4, followed by eighth notes A4, B4, C5, B4, A4, G4, F#4, E4, D4, C4. The second staff continues the melody with a quarter note D4, followed by eighth notes C4, B3, A3, G3, F#3, E3, D3, C3. The third and fourth staves provide a bass line, starting with a treble clef and a key signature of one sharp. The bass line consists of eighth notes: G3, F#3, E3, D3, C3, B2, A2, G2, F#2, E2, D2, C2.

13. Jack Robinson

Musical score for 'Jack Robinson' in G major (one sharp) and 4/4 time. The score consists of four staves. The first staff is the melody. The second and fourth staves contain first and second endings, marked '1.' and '2.' respectively. The third staff is a continuous accompaniment line.

14. S'iomadh Rud a Chunna Mi

Musical score for 'S'iomadh Rud a Chunna Mi' in G major (one sharp) and 4/4 time. The score consists of four staves, all of which are continuous accompaniment lines.

15. Dunrobin Castle (Jimmy's Return)

Musical score for 'Dunrobin Castle (Jimmy's Return)' in G major (one sharp) and 4/4 time. The score consists of four staves, all of which are continuous accompaniment lines.

16. Up Da Stroods Da Sailor Goes

Musical score for 'Up Da Stroods Da Sailor Goes'. The score is written in treble clef with a key signature of one sharp (F#) and a time signature of 4/4. It consists of four staves. The first staff begins with a repeat sign and a 4/4 time signature. The melody is primarily eighth and sixteenth notes. The second staff continues the melody. The third and fourth staves provide a bass line, featuring a mix of eighth and sixteenth notes, with some accidentals (sharps) in the third and fourth measures.

17. Old Tom of Oxford

Musical score for 'Old Tom of Oxford'. The score is written in treble clef with a key signature of one sharp (F#) and a time signature of 4/4. It consists of four staves. The first staff begins with a repeat sign and a 4/4 time signature. The melody is primarily eighth and sixteenth notes. The second staff continues the melody. The third and fourth staves provide a bass line, featuring a mix of eighth and sixteenth notes, with some accidentals (sharps) in the third and fourth measures.

18. Princess Royal

Musical score for 'Princess Royal'. The score is written in treble clef with a key signature of one sharp (F#) and a time signature of 4/4. It consists of four staves. The first staff begins with a repeat sign and a 4/4 time signature. The melody is primarily eighth and sixteenth notes. The second staff continues the melody and includes a first ending bracket labeled '1.' and a second ending bracket labeled '2.'. The third and fourth staves provide a bass line, featuring a mix of eighth and sixteenth notes, with some accidentals (sharps) in the third and fourth measures.


2/4 Tunes: Polkas

19. The Ballydesmond



Musical notation for 'The Ballydesmond' in 2/4 time. The piece is written in a key signature of one sharp (F#). It consists of two staves: a treble staff and a bass staff. The melody is primarily in the treble staff, while the bass staff provides a rhythmic accompaniment. The piece concludes with a double bar line and repeat dots.

20. Bear Dance



Musical notation for 'Bear Dance' in 2/4 time. The piece is written in a key signature of one sharp (F#). It consists of two staves: a treble staff and a bass staff. The melody is primarily in the treble staff, while the bass staff provides a rhythmic accompaniment. The piece concludes with a double bar line and repeat dots.

6/8 Tunes: Jigs

21. The Lark in the Morning



Musical notation for 'The Lark in the Morning' in 6/8 time. The piece is written in a key signature of two sharps (F# and C#). It consists of two staves: a treble staff and a bass staff. The melody is primarily in the treble staff, while the bass staff provides a rhythmic accompaniment. The piece concludes with a double bar line and repeat dots.

22. Young May Moon

Musical score for "Young May Moon" in 6/8 time, key of D major. The score consists of four staves. The first staff is the treble clef, and the second, third, and fourth staves are the bass clef. The music features a melody in the treble clef and a bass line in the bass clef. The piece includes a first ending and a second ending, both marked with "1." and "2." above the notes.

23. Hopkinson's Favourite

Musical score for "Hopkinson's Favourite" in 6/8 time, key of B minor. The score consists of four staves. The first staff is the treble clef, and the second, third, and fourth staves are the bass clef. The music features a melody in the treble clef and a bass line in the bass clef. The piece concludes with a double bar line and repeat dots.

24. Banks of the Dee

Musical score for "Banks of the Dee" in 6/8 time, key of D major. The score consists of three staves. The first staff is the treble clef, and the second and third staves are the bass clef. The music features a melody in the treble clef and a bass line in the bass clef. The piece concludes with a double bar line and repeat dots.

25. Dribbles of Brandy

Musical score for "Dribbles of Brandy". The score is written for four staves in 6/8 time, with a key signature of one sharp (F#). The first two staves contain the melody, and the last two staves contain the bass line. The piece concludes with a double bar line and repeat dots.

26. Seven Stars

Musical score for "Seven Stars". The score is written for four staves in 6/8 time, with a key signature of two sharps (F# and C#). The first two staves contain the melody, and the last two staves contain the bass line. The piece concludes with a double bar line and repeat dots.

27. Morgan Rattler

Musical score for "Morgan Rattler". The score is written for six staves in 6/8 time, with a key signature of two sharps (F# and C#). The first two staves contain the melody, and the last four staves contain the bass line. The piece includes first and second endings, indicated by "1." and "2." above the notes. The piece concludes with a double bar line and repeat dots.

28. Upon A Summer's Day

Musical notation for 'Upon A Summer's Day'. The piece is in 3/8 time and G major. It consists of two staves. The first staff contains the melody, and the second staff contains the bass line. The melody begins with a quarter rest, followed by a quarter note G, an eighth note A, and a quarter note B. The bass line starts with a quarter note G, followed by an eighth note A and a quarter note B. The piece concludes with a double bar line and repeat dots.

29. The Coleraine

Musical notation for 'The Coleraine'. The piece is in 3/8 time and G major. It consists of four staves. The first staff contains the melody, and the second staff contains the bass line. The melody features a first ending (marked '1.') and a second ending (marked '2.'). The first ending leads back to the beginning of the piece, while the second ending concludes the piece. The bass line provides a steady accompaniment with eighth and quarter notes.

30. Joe Derrane's

Musical notation for 'Joe Derrane's'. The piece is in 3/8 time and G major. It consists of four staves. The first staff contains the melody, and the second staff contains the bass line. The melody features a first ending (marked '1.') and a second ending (marked '2.'). The first ending leads back to the beginning of the piece, while the second ending concludes the piece. The bass line provides a steady accompaniment with eighth and quarter notes.

31. The Old Favourite

Musical score for 'The Old Favourite' in G major, 6/8 time. The score consists of four staves. The first staff is the treble clef melody. The second staff is the bass clef accompaniment, featuring a first ending (marked '1.') and a second ending (marked '2.'). The third and fourth staves are additional bass clef accompaniment lines. The piece concludes with a double bar line and repeat dots.

32. Jenny Pluck Pears

Musical score for 'Jenny Pluck Pears' in G major, 6/8 time. The score consists of four staves. The first staff is the treble clef melody. The second, third, and fourth staves are bass clef accompaniment lines. The piece concludes with a double bar line and repeat dots.

33. Banish Misfortune

Musical score for 'Banish Misfortune' in G major, 6/8 time. The score consists of six staves. The first staff is the treble clef melody. The second, third, fourth, fifth, and sixth staves are bass clef accompaniment lines. The piece concludes with a double bar line and repeat dots.

34. Hunt the Squirrel

Musical notation for 'Hunt the Squirrel' in 6/8 time, key of D major. The piece consists of two staves. The first staff contains the melody, and the second staff contains the accompaniment. The melody begins with a quarter note G4, followed by quarter notes A4, B4, and C5. The accompaniment starts with a quarter note G3, followed by quarter notes A3, B3, and C4. The piece concludes with a double bar line and repeat dots.

35. Swaggering Boney (How Do You Do?, Travel by Steam)

Musical notation for 'Swaggering Boney' in 6/8 time, key of D major. The piece consists of three staves. The first staff contains the melody with two first and second endings. The second and third staves contain the accompaniment. The melody begins with a quarter note G4, followed by quarter notes A4, B4, and C5. The accompaniment starts with a quarter note G3, followed by quarter notes A3, B3, and C4. The piece concludes with a double bar line and repeat dots.

36. Black Joak

Musical notation for 'Black Joak' in 6/8 time, key of D major. The piece consists of three staves. The first staff contains the melody with two first and second endings. The second and third staves contain the accompaniment. The melody begins with a quarter note G4, followed by quarter notes A4, B4, and C5. The accompaniment starts with a quarter note G3, followed by quarter notes A3, B3, and C4. The piece concludes with a double bar line and repeat dots.

37. The Kesh

Musical score for 'The Kesh' in 6/8 time, key of D major. The score consists of four staves. The first staff is the treble clef melody. The second staff is the alto clef accompaniment. The third staff is the bass clef accompaniment. The fourth staff is the bass clef accompaniment. The piece concludes with a double bar line and repeat dots.

38. Out on the Ocean

Musical score for 'Out on the Ocean' in 6/8 time, key of D major. The score consists of four staves. The first staff is the treble clef melody. The second staff is the alto clef accompaniment. The third staff is the bass clef accompaniment. The fourth staff is the bass clef accompaniment. The piece concludes with a double bar line and repeat dots.

9/8 Tunes: Slip Jigs

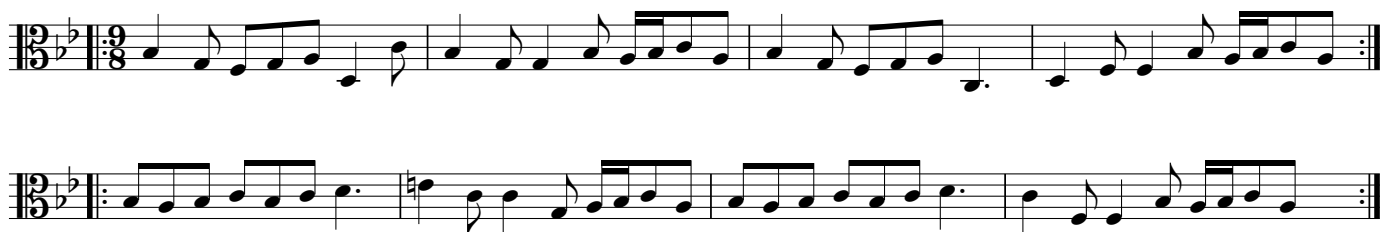
39. The Derby Hunt



40. The Peacock Followed the Hen



41. Namptwich Fair



42. Andrew Carr's



43. The Butterfly

Musical score for 'The Butterfly' in G major, 9/8 time. The score consists of three staves. The first staff is the treble clef, the second is the alto clef, and the third is the bass clef. The music features a mix of eighth and sixteenth notes, with a repeat sign at the end of each line.

44. Foxhunter's Jig

Musical score for 'Foxhunter's Jig' in G major, 9/8 time. The score consists of four staves. The first staff is the treble clef, the second is the alto clef, the third is the bass clef, and the fourth is the bass clef. The music features a mix of eighth and sixteenth notes, with a repeat sign at the end of each line.

3/2 Hornpipes

45. If You Will Not Have Me, You May Let Me Go

Musical score for 'If You Will Not Have Me, You May Let Me Go'. The score is written in 3/2 time and D major. It consists of four staves. The first staff is the treble clef, and the second, third, and fourth staves are the bass clef. The music features a mix of eighth and sixteenth notes, with some rests and repeat signs.

46. Purlongs

Musical score for 'Purlongs'. The score is written in 3/2 time and D major. It consists of three staves. The first staff is the treble clef, and the second and third staves are the bass clef. The music features a mix of eighth and sixteenth notes, with some rests and repeat signs.

47. Cobbler's Hornpipe

Musical score for 'Cobbler's Hornpipe'. The score is written in 3/2 time and B minor. It consists of two staves. The first staff is the treble clef, and the second staff is the bass clef. The music features a mix of eighth and sixteenth notes, with some rests and repeat signs.

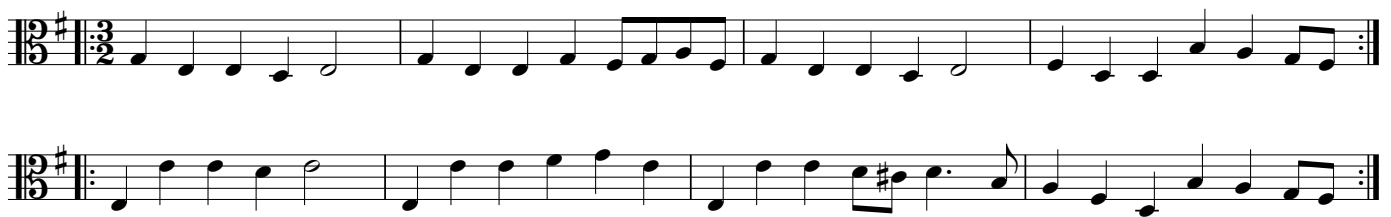
48. Barham Down



49. The Bonny Miller



50. Keys to the Cellar



51. Bullock's Hornpipe



3/4 Tunes: Waltzes

52. Michael Turner's Waltz

(attrib. Mozart)

Musical score for Michael Turner's Waltz, attributed to Mozart. The score is in 3/4 time and G major. It consists of four staves. The first staff is the treble clef, and the second, third, and fourth staves are the bass clef. The music features a repeating first ending and a second ending. The first ending is marked with a bracket and the number '1.', and the second ending is marked with a bracket and the number '2.'.

53. Orange in Bloom

(The Sherborne Waltz)

Musical score for Orange in Bloom (The Sherborne Waltz). The score is in 3/4 time and G major. It consists of four staves. The first staff is the treble clef, and the second, third, and fourth staves are the bass clef. The music features a repeating first ending and a second ending. The first ending is marked with a bracket and the number '1.', and the second ending is marked with a bracket and the number '2.'.

54. Sussex Waltz

Musical score for Sussex Waltz. The score is in 3/4 time and G major. It consists of four staves. The first staff is the treble clef, and the second, third, and fourth staves are the bass clef. The music features a repeating first ending and a second ending. The first ending is marked with a bracket and the number '1.', and the second ending is marked with a bracket and the number '2.'.

55. Woolly and Georgey

Musical score for 'Woolly and Georgey' in 3/4 time, key of D major. The score consists of four staves. The first staff begins with a treble clef, a key signature of one sharp (F#), and a 3/4 time signature. The melody is composed of eighth and quarter notes. The second staff continues the melody with eighth and quarter notes. The third staff continues the melody with eighth and quarter notes. The fourth staff continues the melody with eighth and quarter notes, ending with a double bar line and repeat dots.

56. Love and Whiskey

Musical score for 'Love and Whiskey' in 3/4 time, key of D major. The score consists of two staves. The first staff begins with a treble clef, a key signature of one sharp (F#), and a 3/4 time signature. The melody is composed of eighth and quarter notes. The second staff continues the melody with eighth and quarter notes, ending with a double bar line and repeat dots.



The Young Folk Club is run for young people, by young people.

It aims to bring together young people who have a passion for folk music. The club was set up to give young folk enthusiasts the opportunity to share the music they love in a friendly, social environment. Appearances from guest artists give young people a chance to meet professionals on the folk scene.

For more information on forthcoming events please visit:
www.efdss.org/the-young-folk-club

The Young Folk Club is presented by the English Folk Dance and Song Society's Youth Forum. To find out more, please visit
www.efdss.org/learning/young-people



Tunebook designed and compiled by **Rowan Collinson**
Additional transcription by **Finn Collinson**

The Young Folk Club logo designed by **Rowan Collinson**

All efforts have been made to ensure the material presented in this tunebook is traditional and within the public domain. If any copyrighted compositions or editions have inadvertently been used, please contact EFDSS Education.

TUNEBOOK PRODUCED BY EFDSS / THE YOUNG FOLK CLUB, 2021 (REVISED 2022)